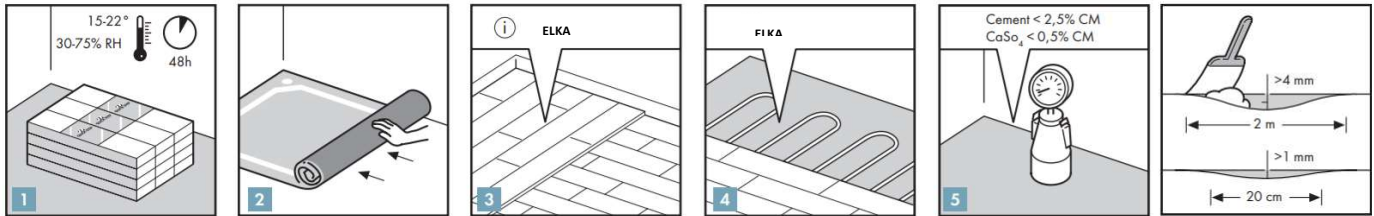


INSTALLATION INSTRUCTIONS FOR ELKA LAMINATE.

IN ORDER TO OBTAIN A GOOD RESULT, WE ADVISE TO FOLLOW ALL GIVEN INSTRUCTIONS CAREFULLY.

PREPARATION



1: Let the planks acclimatize for 48 hours in the unopened packaging at the normal room temperature, in the middle of the room where the floor is to be installed. The ideal conditions are 15-22°C at a relative humidity of 30-75%. If climate conditions are outside this 30-75% range, we strongly advise to acclimatize for 1 week with opened packages.

2: Remove previous floor covering (carpet, needle felt, etc.) first, PVC, linoleum etc does not have to be removed. Always use an underlay compatible with laminate flooring.

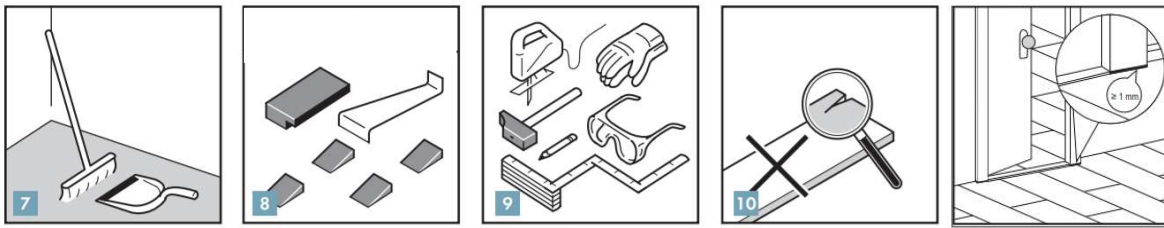
3: WOODEN SUBFLOOR: Remove any existing floor covering first and check for signs of mould and / or insect infestations, this should not be present. Make sure the subfloor is level, nail down any loose parts & install the new floor at ninety degrees to the existing subfloor. If the wooden subfloor is not flat / has unevenness > 2mm and < 4mm because of cupping of the wooden subfloor planks: you can apply a fibre levelling compound / plywood / OSB. The crawl space under the plank floor must be sufficiently ventilated, make sure there is sufficient ventilation.

4: Additional instructions apply if there is underfloor heating or cooling. Your dealer or installer of the floor heating system must guarantee that the floor surface temperature never exceeds 27 degrees °C. Consult Elka for more information.

5: CONCRETE & ANHYDRITE, The moisture content of the subfloor must be less than 2,5%CM / 75%RH (cement screed) or less than 0,5%CM / 50%RH (anhydrite screed - subfloor). In the case of floor heating, results must be respectively 1,5%CM / 60%RH and 0,3%CM / 40%RH.

Always measure, record and keep your moisture content results. A new cement screed floor must dry at least 1 week per 1cm (3/8") thickness up to 4cm (1-1/2"). Thicknesses over 4cm (1-1/2") require twice as much drying time. For example, a 6cm (2-1/2") concrete subfloor must dry at least 8 weeks. Moisture measurements should always be taken and a protocol must be kept for the future. As the drying times are really depending on the climate conditions and the ventilation of the building, these timings are only indicative.

6: Make sure the subfloor is level. Any unevenness greater than 4 mm over the length of 2 meter must be smoothed out. The same applies to any unevenness of more than 1 mm over a length of 20 cm.



7: Make sure that the floor base is flat, clean, firm, and dry.

8: To install your laminate floor, you will need an installation kit (a pulling iron, spacers and a tapping block suitable for the Uniclic® click system),

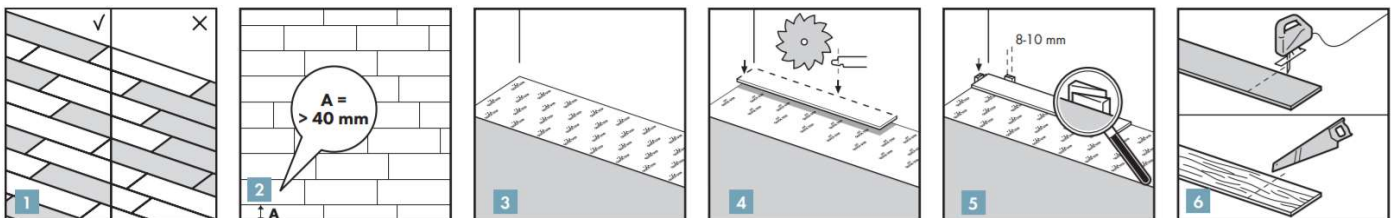
9: You will also need a hammer, saw (a jig-saw, circular saw, hand saw), pencil, tape measure, safety goggles and gloves.

10: Check all panels before and during installation. Defective panels must never be used. An installed plank is considered as accepted and cannot be claimed.

11: Check whether the old skirting can be removed, you can leave the wall skirting boards in place and finish the floor with profiles such as scotia.

12: Check that the doors can still open and close after the floor and underlay have been installed.

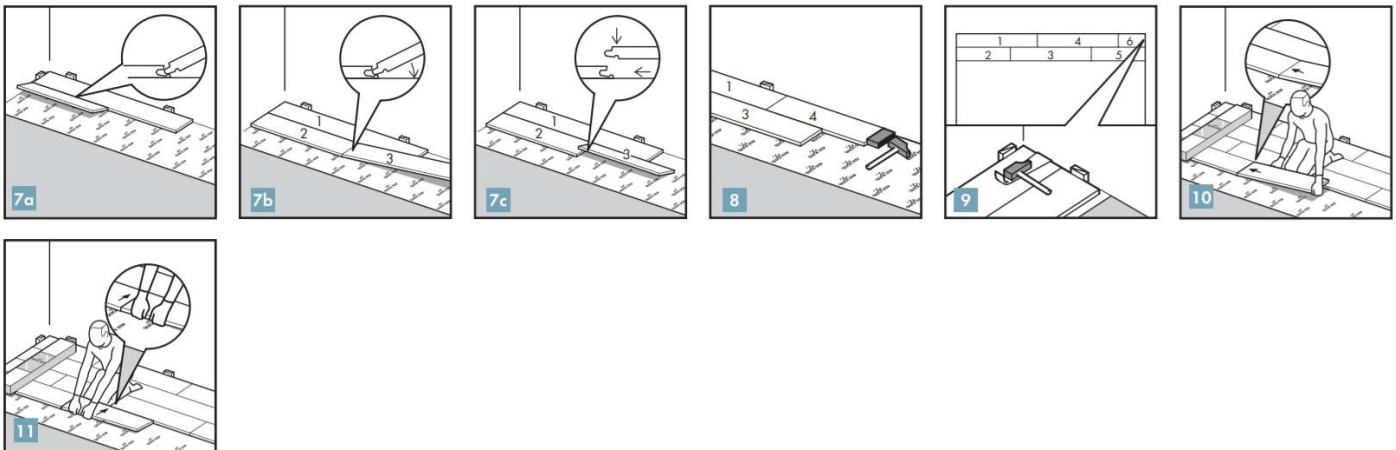
13: Cooking islands for kitchens and other very heavy objects should be installed first and not placed on top of the laminate. The laminate floor must be able to move around the heavy objects to avoid open joints and separating planks.



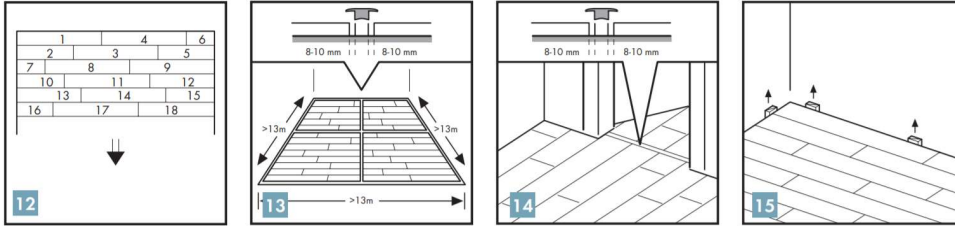
INSTALLATION

With Uniclic® panels you can choose where you want to begin, think about what will be the easiest way to install the floor. We will demonstrate the installation for right-handed people, from left to right. You can work in the other direction if you want. Uniclic® is unique because you can install the planks in two different ways. Method A: Position the panel to be installed at an angle of 20 to 30° to the panel already installed. Move the panel gently up and down and at the same time exert forward pressure, the panels will automatically click into place. You can either insert the tongue into the groove, or the groove on to the tongue. The tongue in groove method is the most common and easiest way. Method B: With Uniclic® you can also tap the panels into each other without lifting. For this method you must use the special Uniclic® tapping block. The planks should not be joined with a single tap, to avoid damaging the panels you must tap them together gradually.

- 1:** Make sure the panels are mixed sufficiently when you install them, so that you do not end up with too many identical, light or dark panels next to each other. To obtain the best visual effect, it is best to fit the floorboards in the direction of the longest wall and parallel to the incidence of light.
- 2:** Before starting, carefully measure the length and the width of the room to plan a precise layout to achieve a balanced appearance of the floor, this is very important when installing tile decors. This will ensure also you won't end up with the last row being too narrow. If the last row would be less than 40mm, the installation will be easier if you cut down the planks of the first row in the length.
- 3:** First install the underlay, per width and gradually as you progress. It is vital that you use underlays to smooth any unevenness in the base floor. Dependent on selection the specially designed ELKA underlays have a damp-proof, insulating, noise-reducing and levelling function. The smooth top surface makes installing the laminate panels easier and ensures free movement afterwards. You can find more information about ELKA underlays and how to install them on the underlay packaging or at your dealer.
- 4:** Begin the first row with a whole plank, first saw off the tongue on both the long and the short side that is against the wall.
- 5:** Put the plank with sawn off sides against the walls, put spacers from the installation kit between the planks and the wall, this will ensure that your expansion joint is wide enough: 8 to 10mm
- 6:** Ensure that the end joints of the panels in two successive rows are never in line, always ensure that the joints are staggered by at least 30cm.



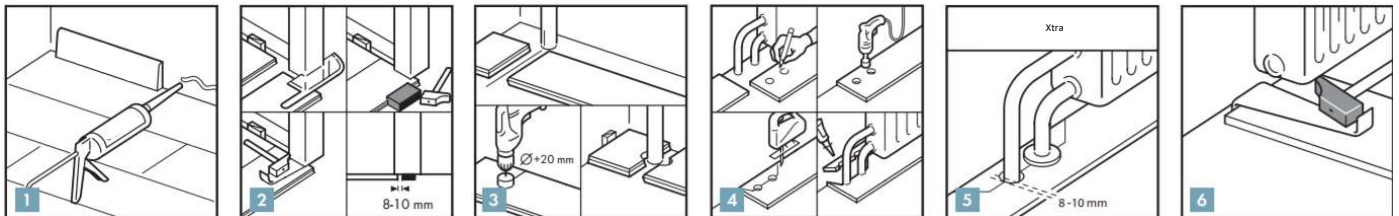
- 7:** Position the panel to be installed at an angle of 20 to 30° to the panel already installed. Move the panel gently up and down and at the same time exert forward pressure, the panels will automatically click into place.
- 8:** With Uniclic® you can also tap the panels into each other without lifting, for this method you must use the special Uniclic® tapping block. The planks should not be joined with a single tap. To avoid damaging the panels you must tap them together gradually.
- 9:** In places where it is too difficult to install the Uniclic® planks with the tapping block (e.g. against the wall), you can tap them together using the pulling iron and a hammer.
- 10:** Once enough rows are installed, it is easy to continue the installation as follows: Put an unopened pack of panels on the already installed rows. Switch your position and click the short side of the panel in the previous panel.
- 11:** Now place your BOTH hands close to the joint as shown in the figure 11 and pull the long side of the plank towards you, the panels will now click together.



12: Continue like this to the end of the room.

13: With lengths of more than 13 m and widths of more than 13 m, there should be an intermediate expansion joint, the swelling and shrinking is linear.

14: Room humidity can vary according to the season, so it is vital that the floor is able to expand and contract. For this reason, make sure you leave an expansion joint of minimum 8 to 10 mm on all sides of the floor, around pipes, thresholds and under doors. Expansion joints can be finished by means of a skirting or scotia. It is mandatory to provide an expansion joint between different rooms (e.g. under the door). 15 Remove all spacers.



FINISHING

1: Install the skirting-board or scotia against the wall, never attach the skirting-board to the floor or use silicone at the edge, this method allows the floor to expand and contract under the skirting-board.

2: When sawing the panels make sure that the expansion joint under the door frame is at least 10mm, if you cannot lift the panel, use the tapping block or pulling iron and hammer to tap the panels together when the planks are flat on the floor.

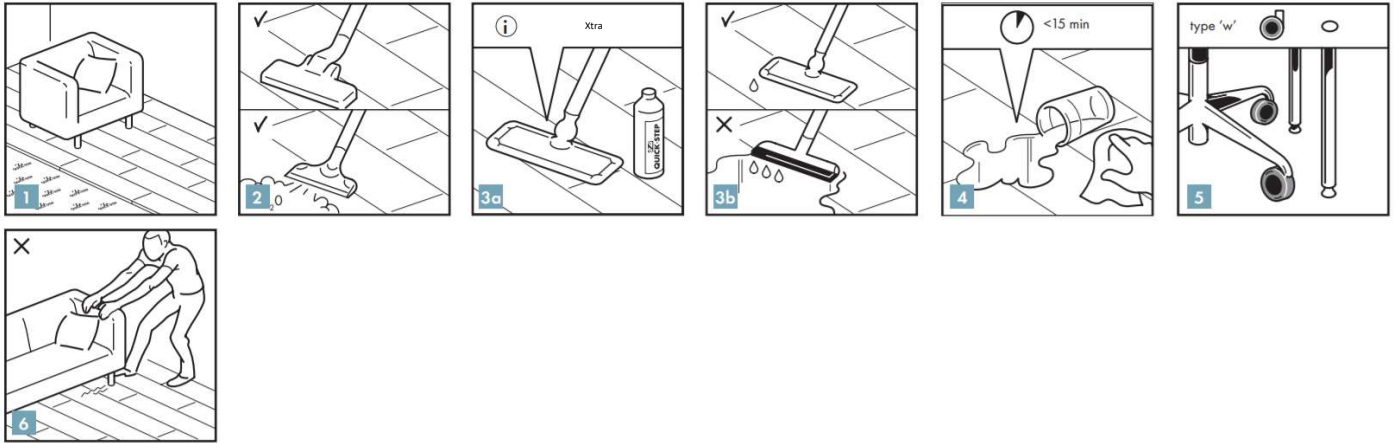
3: In rows where there is a pipe, try to make sure the pipe falls exactly in line with the short side of two panels. Take a drill bit with the same diameter as the pipe plus 20mm. Click the panels together on the short side and drill a hole centred on the joint between the two panels, now you can install the panels on the floor.

4: In rows where there is a double pipe, proceed as follows:

- Measure where the pipe will come through the plank. Don't forget to allow for the expansion joint
- Take a drill bit measuring the diameter of the pipe plus +20mm for the expansion. Drill through the panel where the pipe will come through
- Extend the hole to the edge of the panel
- Lay the panel around the pipe

5: For a perfect finish around pipes, use pipe covers.

6: In places where it is difficult to install the planks with the tapping block (e.g. Underneath radiators), you can tap them together with the pulling iron and a hammer.

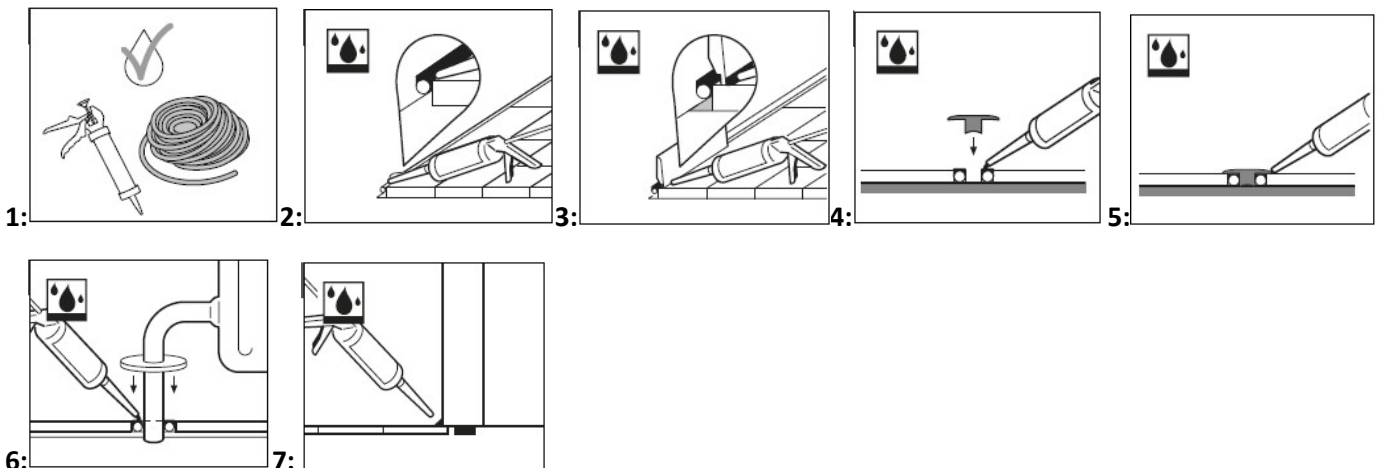


MAINTENANCE You can immediately walk on your new ELKA Laminate floor after installation.

- 1: For dry maintenance, we advise a dry mop or vacuum cleaner, make sure the vacuum cleaner is equipped with soft wheels and a special parquet brush to avoid scratches on your floor.
- 2: Slightly damp maintenance is allowed, we recommend to never use a steam cleaner.
- 3: Remove any water within 24 hours on pressed bevel ranges. For other water resistant ranges, within 12 hours and for non-water resistant laminate within 15 minutes.
- 4: Protect furniture and chair legs. Avoid bringing dirt, water and sand indoors by providing a suitable floor mat at the door. Use (office) chairs and seats with soft wheels (type w) that are suitable for a laminate floor and/or use a suitable desk mat.
- 5: Never drag items of furniture over the floor, always lift them up.
- 6: The smooth surface of your laminate floor will not retain dirt or dust. Remove stubborn stains carefully with acetone or nail polish remover. Never use scouring products! Never use wax or varnish coating on the floor.

FINISHING OF THE FLOORING IN WET AREAS: ONLY FOR WATERRESISTANT LAMINATE

These installation instructions can prevent water infiltration around the perimeter and obstacles of your laminate flooring in wet areas (areas with direct access to outside, areas with risk or dropped liquid on the surface, ...). Following these instructions carefully makes the floor fit for use in ANY room which does not have a build-in floor drain. The water-resistant floor is not suitable for use in damp spaces like showers, pool areas, saunas and rooms with build-in floor drains. Please note that some national regulations are not allowing floating installation in wet rooms. National regulations regarding floor applications must always be followed.





1. For a water resistant finishing, use Smart Finish Aqua Protect kit and the Foam strip.
2. Sealing the perimeter expansion gaps combining the compressible PE Foam strip with diameter 8 to 10 mm and the flexible and Aqua Protect kit. Push the Foam strip in the expansion gaps and apply Smart Finish Aqua Protect kit under slight angle towards the floor.
3. Install the skirting with mounting adhesive. Apply Aqua Protect kit between skirtings and floor to avoid ingress of water. Tip: Moisten a spatula or your finger in a soap solution (water with detergent) and smooth the applied kit. To make work more clean, it can be easy to put a tape on the floor before applying Aqua Protect kit. This tape can be removed immediately after applying the silicone kit. Spilled Aqua Protect kit can be removed easily when it is dry.
4. Fix the base of your incizo profile to the base floor with mounting adhesive and/or screws. Apply Aqua Protect kit on the Foam strip that is in the expansion gap.
5. Push the transition profile in the base profile and the wet Aqua protect. Seal the joint between your floor and profile with Aqua Protect kit. To smooth the kit use again the soap solution.
6. For a perfect finish around pipes, use pipe covers and Smart Finish Aqua Protect kit on top of the Foam strip. Then place the pipe cover and apply Aqua protect around the pipe cove and around the tubes. This makes the ingress of water impossible.
7. To secure extra water protection around the perimeter of the floor and avoid water to enter underneath the panels, apply Aqua Protect kit up to the wall base, thresholds, door frames, pipe covers etc